

Model Information



■ Features

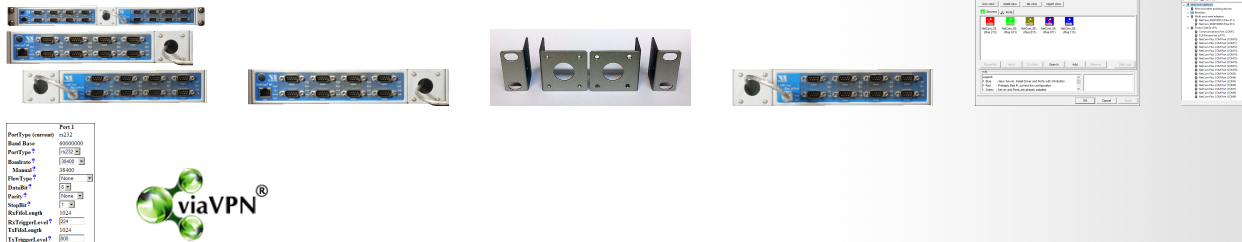
- Consists of [1xNetCom Plus 813](#) and [1xUSB-8COM Plus](#)
- Controls 16 RS232/422/485 devices located virtually anywhere via Ethernet, WLAN or Internet
- Easy selection of RS232, RS422 or RS485 by single DIP switch or individually by software
- **New:** Secure Access over Internet by [viaVPN](#)
- LAN 1000/100/10 Ethernet auto-detect
- NetCom Manager automatically finds NetCom+ devices in the network
- Configuration over Driver Panels, serial Port, Telnet, WEB Browser, SNMP
- Automatic mode switching between Driver and Raw Mode
- Supports TCP/IP, UDP, Telnet, DHCP, ICMP, UPnP, HTTP, SNMP V1/2c/3, DNS, PPP, openVPN
- SSL/AES-256 encryption on Ethernet, WLAN and Internet
- Optional: Wireless network IEEE 802.11b/g/n
- Optional: 3G/4G Modem for mobile networks

[Contact Online...](#)

NetCom Plus 1613 (NetCom 1611RM PRO, NetCom 1613RM PRO)

[Quick Link:](#) | [Features](#) | [More Pictures](#) | [Overview](#) | [Application](#) | [Interface](#) | [Remote Access](#) | [Serial Performance](#) | [Operating Modes](#) | [Power and Environment](#) | [Standards](#) | [Special Features](#) | [Security](#) | [Ordering Information](#) | [Options](#) | [Packaging](#) |

■ More Pictures



Part #	Part Name
6687	NetCom Plus 1613
6688	NetCom Plus 1613RM PRO
6689	NetCom Plus 1613RM PRO
6690	NetCom Plus 1613RM PRO
6691	NetCom Plus 1613RM PRO
6692	NetCom Plus 1613RM PRO
6693	NetCom Plus 1613RM PRO
6694	NetCom Plus 1613RM PRO
6695	NetCom Plus 1613RM PRO
6696	NetCom Plus 1613RM PRO
6697	NetCom Plus 1613RM PRO
6698	NetCom Plus 1613RM PRO
6699	NetCom Plus 1613RM PRO
6700	NetCom Plus 1613RM PRO
6701	NetCom Plus 1613RM PRO
6702	NetCom Plus 1613RM PRO
6703	NetCom Plus 1613RM PRO
6704	NetCom Plus 1613RM PRO
6705	NetCom Plus 1613RM PRO
6706	NetCom Plus 1613RM PRO
6707	NetCom Plus 1613RM PRO
6708	NetCom Plus 1613RM PRO
6709	NetCom Plus 1613RM PRO
6710	NetCom Plus 1613RM PRO
6711	NetCom Plus 1613RM PRO
6712	NetCom Plus 1613RM PRO
6713	NetCom Plus 1613RM PRO
6714	NetCom Plus 1613RM PRO
6715	NetCom Plus 1613RM PRO
6716	NetCom Plus 1613RM PRO
6717	NetCom Plus 1613RM PRO
6718	NetCom Plus 1613RM PRO
6719	NetCom Plus 1613RM PRO
6720	NetCom Plus 1613RM PRO
6721	NetCom Plus 1613RM PRO
6722	NetCom Plus 1613RM PRO
6723	NetCom Plus 1613RM PRO
6724	NetCom Plus 1613RM PRO
6725	NetCom Plus 1613RM PRO
6726	NetCom Plus 1613RM PRO
6727	NetCom Plus 1613RM PRO
6728	NetCom Plus 1613RM PRO
6729	NetCom Plus 1613RM PRO
6730	NetCom Plus 1613RM PRO
6731	NetCom Plus 1613RM PRO
6732	NetCom Plus 1613RM PRO
6733	NetCom Plus 1613RM PRO
6734	NetCom Plus 1613RM PRO
6735	NetCom Plus 1613RM PRO
6736	NetCom Plus 1613RM PRO
6737	NetCom Plus 1613RM PRO
6738	NetCom Plus 1613RM PRO
6739	NetCom Plus 1613RM PRO
6740	NetCom Plus 1613RM PRO
6741	NetCom Plus 1613RM PRO
6742	NetCom Plus 1613RM PRO
6743	NetCom Plus 1613RM PRO
6744	NetCom Plus 1613RM PRO
6745	NetCom Plus 1613RM PRO
6746	NetCom Plus 1613RM PRO
6747	NetCom Plus 1613RM PRO
6748	NetCom Plus 1613RM PRO
6749	NetCom Plus 1613RM PRO
6750	NetCom Plus 1613RM PRO
6751	NetCom Plus 1613RM PRO
6752	NetCom Plus 1613RM PRO
6753	NetCom Plus 1613RM PRO
6754	NetCom Plus 1613RM PRO
6755	NetCom Plus 1613RM PRO
6756	NetCom Plus 1613RM PRO
6757	NetCom Plus 1613RM PRO
6758	NetCom Plus 1613RM PRO
6759	NetCom Plus 1613RM PRO
6760	NetCom Plus 1613RM PRO
6761	NetCom Plus 1613RM PRO
6762	NetCom Plus 1613RM PRO
6763	NetCom Plus 1613RM PRO
6764	NetCom Plus 1613RM PRO
6765	NetCom Plus 1613RM PRO
6766	NetCom Plus 1613RM PRO
6767	NetCom Plus 1613RM PRO
6768	NetCom Plus 1613RM PRO
6769	NetCom Plus 1613RM PRO
6770	NetCom Plus 1613RM PRO
6771	NetCom Plus 1613RM PRO
6772	NetCom Plus 1613RM PRO
6773	NetCom Plus 1613RM PRO
6774	NetCom Plus 1613RM PRO
6775	NetCom Plus 1613RM PRO
6776	NetCom Plus 1613RM PRO
6777	NetCom Plus 1613RM PRO
6778	NetCom Plus 1613RM PRO
6779	NetCom Plus 1613RM PRO
6780	NetCom Plus 1613RM PRO
6781	NetCom Plus 1613RM PRO
6782	NetCom Plus 1613RM PRO
6783	NetCom Plus 1613RM PRO
6784	NetCom Plus 1613RM PRO
6785	NetCom Plus 1613RM PRO
6786	NetCom Plus 1613RM PRO
6787	NetCom Plus 1613RM PRO
6788	NetCom Plus 1613RM PRO
6789	NetCom Plus 1613RM PRO
6790	NetCom Plus 1613RM PRO
6791	NetCom Plus 1613RM PRO
6792	NetCom Plus 1613RM PRO
6793	NetCom Plus 1613RM PRO
6794	NetCom Plus 1613RM PRO
6795	NetCom Plus 1613RM PRO
6796	NetCom Plus 1613RM PRO
6797	NetCom Plus 1613RM PRO
6798	NetCom Plus 1613RM PRO
6799	NetCom Plus 1613RM PRO
6800	NetCom Plus 1613RM PRO



Click on the thumbnails for the large picture ...

[>Back to top](#)

■ Overview

The NetCom+ 1613 actually is a combination of NetCom Plus 813 with USB-8COM Plus, mounted as a pair via a special Rack Mount kit. The NetCom Plus integrates the serial ports from the USB-8COM Plus into the services for the internal port. Both devices are connected via one USB cable, in essence the pair operates as one NetCom Plus with 16 simultaneous serial ports.

As the separate modules the NetCom+ 1613 is an industrial-strength network-based serial device server for connecting sixteen RS232 devices (or RS485 communication lines) like CNC, PLC, weighting scale, scanner and others directly to a network running TCP/IP. The driver for Windows operating system installs Virtual Com Ports. The network is Gigabit Ethernet or optionally wireless by WLAN 802.11b/g/n.

Implemented in the NetCom+ Servers is an option to use [the viaVPN system](#) for Remote Access and Monitoring over Internet. [viaVPN](#) provides secure and strong encrypted access, without any re-configuration of firewalls. Once installed in the local network the NetCom+ are used exactly as without the option viaVPN. But at the same time the operation can be monitored from remote

locations. If the serial port is not occupied by local access, also Virtual Com Port operation is possible from remote.

The NetCom+ Servers use a state-of-the art RISC processor for low power and cost effective design. The serial ports enable data rates of up to 12Mbps in RS422/485 or 1000kbps in RS232 modes. The ports also allow every non-standard bitrate up to 3.5Mbps, and many above that (e.g. 4Mbps). See the [FAQ](#).

NetCom+ can be configured over Driver Panels, WEB Browser, serial Port, Telnet, SNMP and serves as a transparent serial channel without platform and distance limitation. As modern devices the NetCom+ provide encryption for all communication.

■ Application

- Secure Remote Monitoring
- SCADA system
- Building automation system
- Self-service banking system
- Industrial / Factory / Laboratory automation
- Automatic warehouse control system
- Wafer fabrication system
- Other remote and distributed serial devices control

■ Interface

Ethernet interface	Auto-detecting 1000BaseT/100BaseTx/10BaseT (GigaLAN) Connector 8P8C (RJ45)
Wireless interface	Optional via internal module IEEE 802.11b/g/n operation in Access Point or Client Mode
Protocols	TCP/IP, UDP, Telnet, PPP, DHCP, ICMP, UPnP, HTTP, LPD, SNMP V1/2c/3, DNS, openVPN
No. of serial ports	16x DSUB 9 male connector (as PC)
Serial interface	RS232/422/485 individually selected by software or common by DIP-switch
Available Modes	<ul style="list-style-type: none">• RS232 full duplex• RS422 full duplex (120Ω on/off)• RS485 4 wire, full duplex (120Ω on/off)• RS485 2 wire, half duplex (120Ω on/off) Internal Termination, controlled by operation mode BIAS resistors not required
Signals	<ul style="list-style-type: none">• RS232: TxD,RxD, RTS,CTS, DTR,DSR, DCD, GND• RS422: Tx+/-, Rx+/-, GND• RS485 2 wire: Data+/-, GND• RS485 4 wire: Tx+/-, Rx+/-, GND
RS485 Data control	Controlled by ART (Automatic Receive Transmit control)
Mini PCIe slot	Option: mPCIe over USB interface for 3G / 4G connections. Uses internal SIM slot.

[>Back to top](#)

■ Remote Access

Connect via Internet	The system viaVPN provides secure and easy access to remotely installed devices. The installation is quickly done and provides convenient tools to get access from all locations
Security	All connections use VPN-tunnels encrypted by SSL and AES-256. And even when remote access to a NetCom Plus Server is possible, this does not provide access to the network the Server is installed in.
Firewall friendly	Access to the viaVPN Cloud Servers is done like https protocol in a browser. If web pages can be viewed from a location, access to the Cloud is also possible. No re-configuration of firewalls required.

[>Back to top](#)

■ Serial Performance

Speed	RS232: 200 bps to 921.6/1000 kbps RS422/485: 200 bps to 12 Mbps Supports non-standard baudrates
Parity	None, even, odd, mark, space

Data bits	7, 8
Stop bits	1, 2
>Back to top	
■ Operating Modes	
Driver Mode	VScom Driver for Windows up to 10, Server up to 2008 R2, both x86 and x64 Editions. The Driver creates a virtual Com port, using VScom NetCom protocol.
Other Modes	TCP Raw Server, TCP Raw Client, Null Modem Tunnel, UDP Mode, Print Server and IP Modem
>Back to top	
■ Power and Environment	
Connector	3-pin Terminal Block with Protective Earth
Power requirements	9 - 54V DC, 0.5A @ 12V, 6W 0.8A @ 12V, 9W when USB-8COM Plus is supplied via USB
Dimension	437×147×44 mm ³ (W×L×H)
Operating Temp	-20°C - 65°C
Storage Temp	-20°C - 85°C
Case	SECC sheet metal (1mm). 2 cases!
Weight	1.9kg
Mounting	19-inch Rack
>Back to top	
■ Standards	
Declarations	CE, FCC
EMI	<ul style="list-style-type: none"> • EN 55022 Class B • EN 61000-3-2: Limits of harmonic current emissions • EN 61000-3-3: Limitation of voltage changes • 47 CFR FCC Part 15 Subpart B
EMS (EN 55024)	<ul style="list-style-type: none"> • EN 61000-4-3: Radiated RFI • EN 61000-4-4: Electrical Fast Transient • EN 61000-4-5: Surge • EN 61000-4-6: Induced RFI • EN 61000-4-8: Power Frequency Magnetic Field • EN 61000-4-11: Power supply dips
ESD	EN 61000-4-2 4kV contact 8kV air for <ul style="list-style-type: none"> • Serial Ports • USB • Ethernet • DC Power connector
>Back to top	
■ Special Features	
Installation	For easy installation the configuration utility NetCom Plus Manager automatically finds NetCom+ devices in the network
Operating mode	Automatic mode switching between Driver and TCP RAW Server mode.
Configuration	Configuration over Driver Panels, NetCom Manager, WEB Browser, serial console, Telnet, SNMP
Firewall	Special precautions for Firewall environments
Firmware	Firmware update over WEB Browser
LEDs	LEDs for Power, Ready, WLAN, serial Tx, Rx, Ethernet Link, Speed
UPnP	The NetCom Plus Serial Device Servers announce their presence in the network using the protocol UPnP. This way it is most easy to know the IP Address and to open the web interface for configuration.
>Back to top	

■ Security

Password access

Every capabilities of configuration use the same password including SNMP V3

Secure communication

[OpenVPN™](#) SSL tunnel provides security on Ethernet and Internet. The tunnel protects configuration and serial data, especially convenient to use across the Internet. OpenVPN software is available for many systems, including Windows, Linux and Mac OS. Strong encryption by AES up to 256 bit keys.

[>Back to top](#)

■ Ordering Information

6685

NetCom Plus 813 (8x RS232/422/485, expandable)

6694

RK-NCP

612

USB-8COM Plus (8x RS232/422/485, expandable)

[>Back to top](#)

■ Options

6679

Activate option [viaVPN](#) for secure remote access over Internet

6689

WLAN Kit internal
internal module 802.11b/g/n, pigtail and antenna
Purchase time option, not for later retrofitting
This option allows for replacement of NetCom 823RM WLAN

6031

Power supply adapter 12V DC, 1A

[661](#)

Serial Null-Modem adapter 9PF-9PF, change male to female

[663](#)

5-pin Terminal block adapter to DB9 female

[6061](#)

RJ45 adapter to DB9 female

[>Back to top](#)

■ Packaging

Packing list

- NetCom Plus Serial Device Server
- Mounting brackets for 19-inch rack
- Wall mount plates
- Terminal block for Power Supply

[>Back to top](#)

NetCom Plus 1613

[>Back](#)



NetCom Plus 1613 Left Part=NetCom Plus 813

[>Back](#)



RK-NCP

[>Back](#)



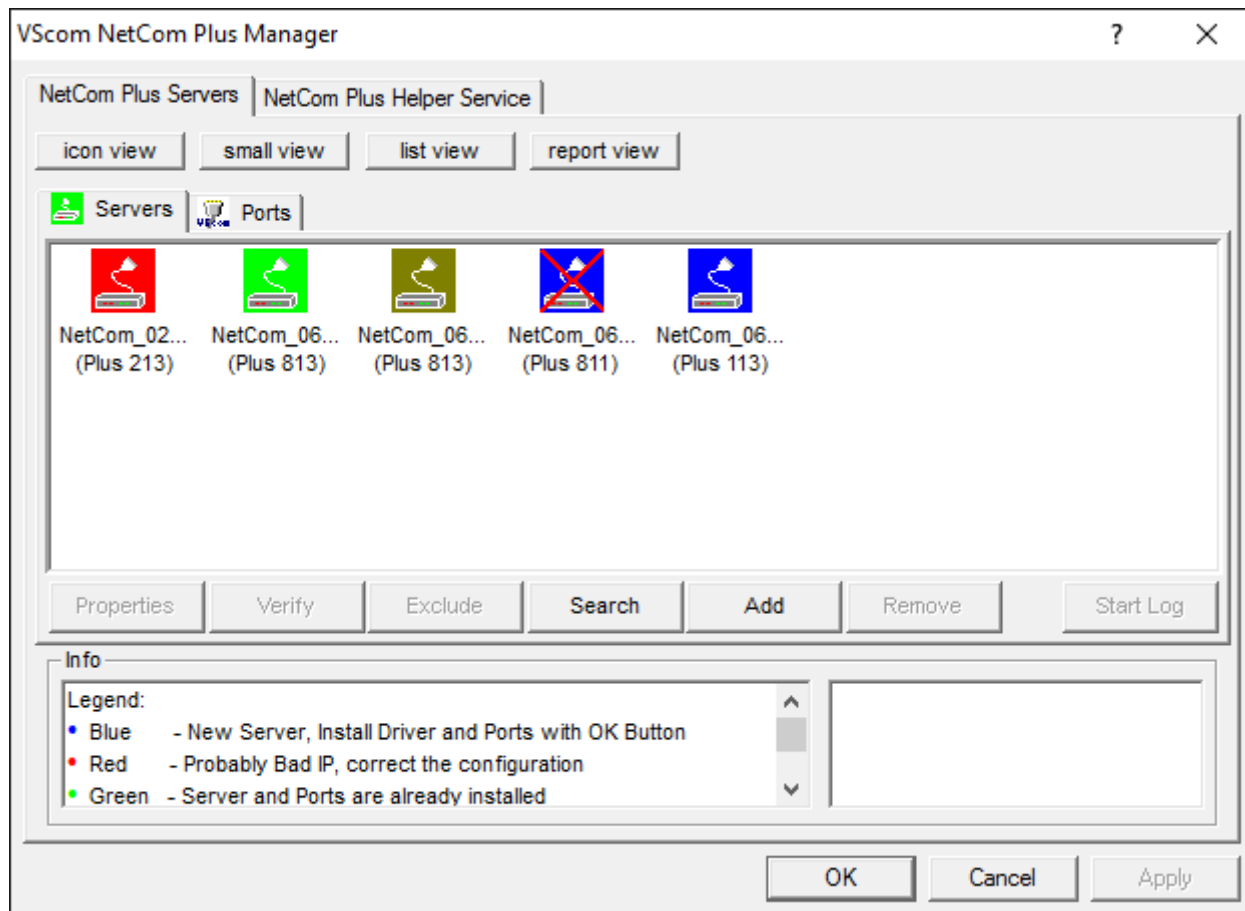
NetCom Plus 1613 Right Part=USB-8COM Plus

[>Back](#)



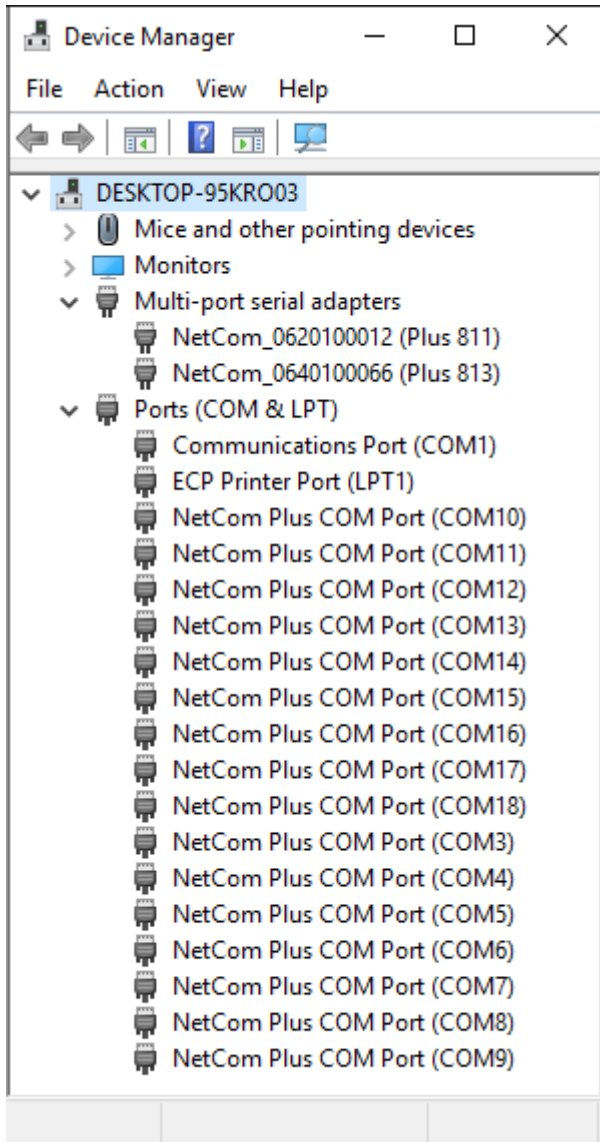
NetCom Plus Manager

[>Back](#)



NetCom Plus in Device Manager

[>Back](#)



Serial Port in Web Interface

[>Back](#)

Port 1	
PortType (current)	rs232
Baud Base	60000000
PortType ?	<input type="text" value="rs232"/>
Baudrate ?	<input type="text" value="38400"/>
Manual ?	38400
FlowType ?	<input type="text" value="None"/>
DataBit ?	<input type="text" value="8"/>
Parity ?	<input type="text" value="None"/>
StopBit ?	<input type="text" value="1"/>
RxFifoLength	1024
RxTriggerLevel ?	<input type="text" value="224"/>
TxFifoLength	1024
TxTriggerLevel ?	<input type="text" value="800"/>

Remote Access option

[>Back](#)



(2017 Mar 17)