

## Model Information



## ■ Features

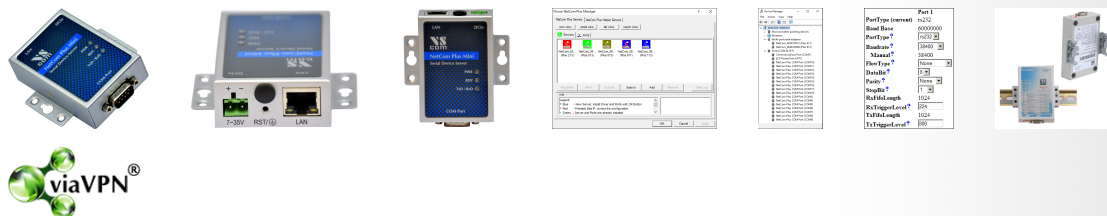
- **Now available**
- Controls 1 RS232 device located virtually anywhere via Ethernet or Internet
- LAN 100/10 Ethernet auto-detect
- **New:** Secure Access over Internet by [viaVPN](#)
- NetCom Plus Manager automatically finds NetCom+ devices in the network
- Configuration over Driver Panels, serial Port, Telnet, WEB Browser, SNMP
- Automatic mode switching between Driver and Raw Mode
- Supports TCP/IP, UDP, Telnet, DHCP, ICMP, UPnP, HTTP, SNMP V1/2c/3, DNS, PPP, openVPN
- SSL/AES-256 encryption on Ethernet and Internet

[Contact Online...](#)

## NetCom Plus 111 Mini (NetCom 111, NetCom Mini)

Quick Link: | [Features](#) | [More Pictures](#) | [Overview](#) | [Application](#) | [Interface](#) | [Remote Access](#) | [Serial Performance](#) | [Operating Modes](#) | [Power and Environment](#) | [Standards](#) | [Special Features](#) | [Security](#) | [Ordering Information](#) | [Options](#) | [Packaging](#) |

## ■ More Pictures



Click on the thumbnails for the large picture ...

[> Back to top](#)

## ■ Overview

The NetCom+ 111 Mini is an industrial-strength network-based serial device server for connecting one RS232 device like CNC, PLC, weighting scale, scanner and others directly to a network running TCP/IP. The driver for Windows operating system installs a Virtual Com Port. The network is Fast Ethernet.

Implemented in the NetCom+ Servers is an option to use [the viaVPN system](#) for Remote Access and Monitoring over Internet. [viaVPN](#) provides secure and strong encrypted access, without any re-configuration of firewalls. Once installed in the local network the NetCom+ are used exactly as without the option viaVPN. But at the same time the operation can be monitored from remote locations. If the serial port is not occupied by local access, also Virtual Com Port operation is possible from remote.

The NetCom+ Mini uses a special RISC processor for very low power and cost effective design. Power supply is via DC adapter.

The serial port enables data rates of up to 500kbps, including every non-standard bitrate. See the [FAQ](#).

NetCom+ can be configured over Driver Panels, WEB Browser, serial Port, Telnet, SNMP and serves as a transparent serial channel without platform and distance limitation. As modern devices the NetCom+ provide encryption for all communication.

## ■ Application

- Secure Remote Monitoring
- SCADA system
- Building automation system
- Self-service banking system
- Industrial / Factory / Laboratory automation
- Automatic warehouse control system
- Wafer fabrication system
- Other remote and distributed serial devices control

## ■ Interface

<b>Ethernet interface</b>	Auto-detecting 100BaseTx/10BaseT (Fast Ethernet) Connector 8P8C (RJ45)
<b>Protocols</b>	TCP/IP, UDP, Telnet, PPP, DHCP, ICMP, UPnP, HTTP, LPD, SNMP V1/2c/3, DNS, openVPN
<b>No. of serial ports</b>	1x DSUB 9 male connector (as PC)
<b>Serial interface</b>	RS232
<b>Signals</b>	TxD,RxD, RTS,CTS, DTR,DSR, DCD, RI, GND

[>Back to top](#)

## ■ Remote Access

<b>Connect via Internet</b>	The <a href="#">system viaVPN</a> provides secure and easy access to remotely installed devices. The installation is quickly done and provides convenient tools to get access from all locations
<b>Security</b>	All connections use VPN-tunnels encrypted by SSL and AES-256. And even when remote access to a NetCom Plus Server is possible, this does not provide access to the network the Server is installed in.
<b>Firewall friendly</b>	Access to the viaVPN Cloud Servers is done like https protocol in a browser. If web pages can be viewed from a location, access to the Cloud is also possible. No re-configuration of firewalls required.

[>Back to top](#)

## ■ Serial Performance

<b>Speed</b>	200 bps to 460.8/500 kbps Supports non-standard baudrates
<b>Parity</b>	None, even, odd, mark, space
<b>Data bits</b>	7, 8
<b>Stop bits</b>	1, 2

[>Back to top](#)

## ■ Operating Modes

<b>Driver Mode</b>	VScom Driver for Windows up to 10, Server up to 2008 R2, both x86 and x64 Editions. The Driver creates a virtual Com port, using VScom NetCom protocol.
<b>Other Modes</b>	TCP Raw Server, TCP Raw Client, Null Modem Tunnel, UDP Mode, Print Server and IP Modem

[>Back to top](#)

## ■ Power and Environment

<b>Connector</b>	2-pin Terminal Block
<b>Power requirements</b>	9 - 30V DC, 80mA @ 12V, 1W
<b>Dimensions</b>	50×72×22 mm <sup>3</sup> (W×L×H) Case 72×72×22 mm <sup>3</sup> (W×L×H) with mounting wings
<b>Operating Temp</b>	−20°C - 65°C
<b>Storage Temp</b>	−20°C - 85°C
<b>Case</b>	SECC sheet metal (1mm)
<b>Weight</b>	0.10kg
<b>Mounting</b>	<ul style="list-style-type: none"><li>• DIN-Rail (optional)</li><li>• Wall mount</li></ul>

[>Back to top](#)

## ■ Standards

<b>Declarations</b>	CE, FCC
<b>EMI</b>	<ul style="list-style-type: none"> <li>• EN 55022 Class B</li> <li>• EN 61000-3-2: Limits of harmonic current emissions</li> <li>• EN 61000-3-3: Limitation of voltage changes</li> <li>• 47 CFR FCC Part 15 Subpart B</li> </ul>
<b>EMS (EN 55024)</b>	<ul style="list-style-type: none"> <li>• EN 61000-4-3: Radiated RFI</li> <li>• EN 61000-4-4: Electrical Fast Transient</li> <li>• EN 61000-4-5: Surge</li> <li>• EN 61000-4-6: Induced RFI</li> <li>• EN 61000-4-8: Power Frequency Magnetic Field</li> <li>• EN 61000-4-11: Power supply dips</li> </ul>
<b>ESD</b>	EN 61000-4-2 4kV contact 8kV air for <ul style="list-style-type: none"> <li>• Serial Port</li> <li>• Ethernet</li> <li>• DC Power connector</li> </ul>

[>Back to top](#)

## ■ Special Features

<b>Installation</b>	For easy installation the configuration utility NetCom Plus Manager automatically finds NetCom+ devices in the network
<b>Operating mode</b>	Automatic mode switching between Driver and TCP RAW Server mode.
<b>Configuration</b>	Configuration over Driver Panels, NetCom Manager, WEB Browser, serial console, Telnet, SNMP
<b>Firewall</b>	Special precautions for Firewall environments
<b>Firmware</b>	Firmware update over WEB Browser
<b>LEDs</b>	LEDs for Power, Ready, serial Tx/Rx, Ethernet Link, Speed
<b>UPnP</b>	The NetCom Plus Serial Device Servers announce their presence in the network using the protocol UPnP. This way it is most easy to know the IP Address and to open the web interface for configuration.

[>Back to top](#)

## ■ Security

<b>Password access</b>	Every capabilities of configuration use the same password including SNMP V3
<b>Secure communication</b>	<a href="#">OpenVPN™</a> SSL tunnel provides security on Ethernet and Internet. The tunnel protects configuration and serial data, especially convenient to use across the Internet. OpenVPN software is available for many systems, including Windows, Linux and Mac OS. Strong encryption by AES up to 256 bit keys.

[>Back to top](#)

## ■ Ordering Information

<b>6643</b>	NetCom Plus 111 Mini (1x RS232)
-------------	---------------------------------

[>Back to top](#)

## ■ Options

<b>6679</b>	Activate option <a href="#">viaVPN</a> for secure remote access over Internet
<b>6031</b>	Power supply adapter 12V DC, 1A
<a href="#">661</a>	Serial Null-Modem adapter 9PF-9PF, change male to female
<a href="#">662</a>	DK 35A DIN-Rail mounting kit

[>Back to top](#)

## ■ Packaging

<b>Packing list</b>	<ul style="list-style-type: none"> <li>• NetCom Plus Serial Device Server</li> <li>• Terminal block for Power Supply</li> </ul>
---------------------	---

[>Back to top](#)

## NetCom Plus 111 Mini

[>Back](#)



## NetCom Plus Mini LAN Side

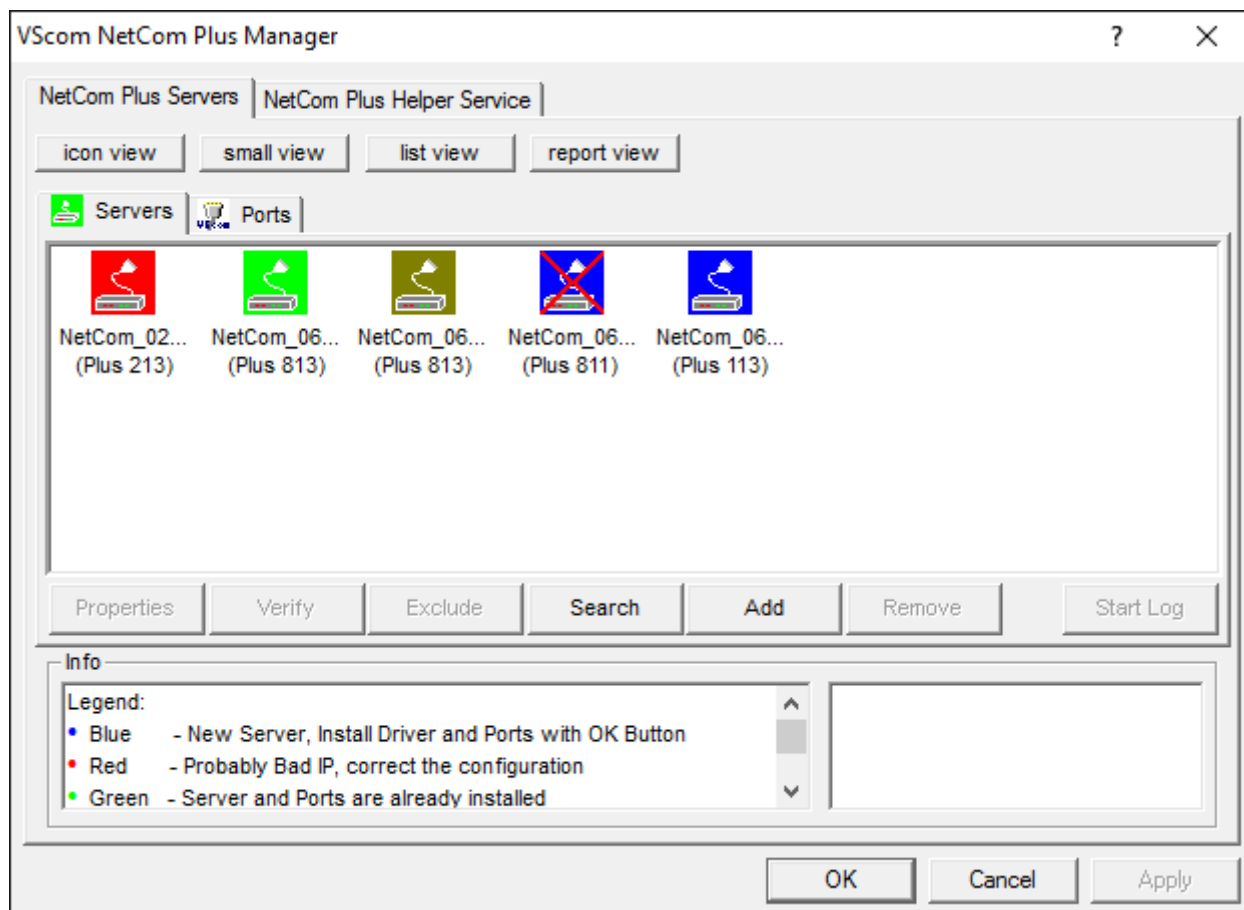
[>Back](#)





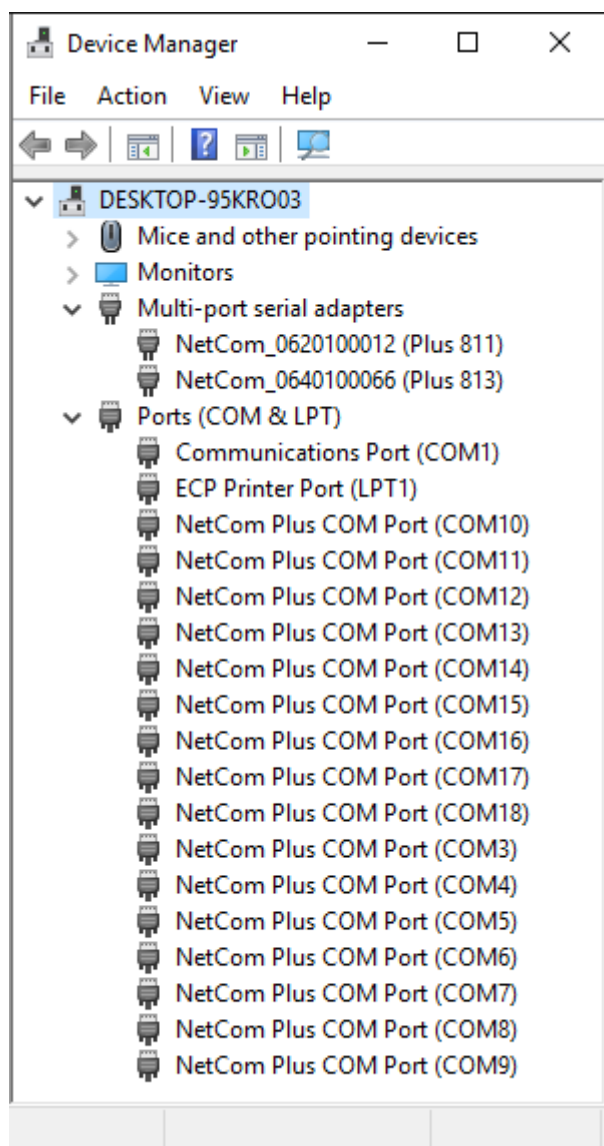
## NetCom Plus Manager

[>Back](#)



## NetCom Plus in Device Manager

[>Back](#)



## Serial Port in Web Interface

[>Back](#)

	Port 1
PortType (current)	rs232
Baud Base	60000000
PortType ?	<input type="text" value="rs232"/>
Baudrate ?	<input type="text" value="38400"/>
Manual ?	38400
FlowType ?	<input type="text" value="None"/>
DataBit ?	<input type="text" value="8"/>
Parity ?	<input type="text" value="None"/>
StopBit ?	<input type="text" value="1"/>
RxFifoLength	1024
RxTriggerLevel ?	<input type="text" value="224"/>
TxFifoLength	1024
TxTriggerLevel ?	<input type="text" value="800"/>

## DIN-Rail Kit

[>Back](#)



## Remote Access option

[>Back](#)



(2017 Apr 03)